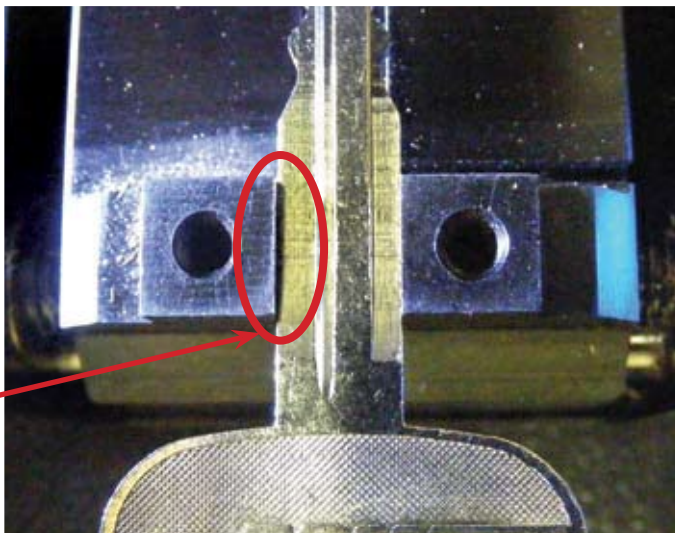


**INCORRECT**  
Gap between key  
and key clamps



When clamping double sided keys, such as the TOY43 shown in the photo, it is important to ensure the key is sitting correctly, otherwise it will not decode or cut correctly.



**CORRECT**  
Key is sitting flush  
with key clamps



Always ensure the key is firmly clamped, and sitting flush with the body of the clamp.  
(See picture below)